

Alex Waylett

Butterflies with Soluble Fabric

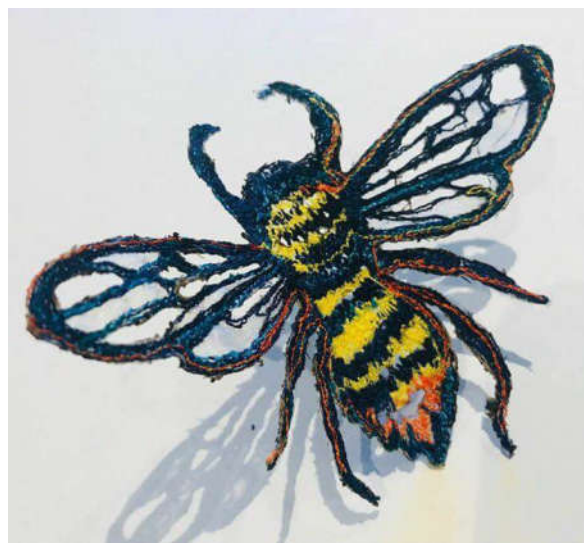
Tuesday 23rd October 2018 10.30 – 4.00



Requirements List

You will need:

A graphic black and white butterfly/bumble bee image on A4 paper. It needs to fit inside your machine embroidery hoop, so the image can't be too big. For example, google butterfly illustrations and then press 'images'. If in doubt message Alex the design you find: alex.waylett@btinternet.com. Alex will have some images for you also but thought you should use the opportunity to experiment with any that you find. The best ones will work with two wings rather than one.



Once you have found an image - print this off plus one 20% smaller and one 20% bigger. This will give you three different sizes to work from although it is likely you will only fully complete one as its quite a labour-intensive project!

If you would prefer to exchange butterflies for flowers and bring some images, that will work too.

You will also need:

- A sewing machine with an extension table (**let us know if you wish to borrow one of our sewing machines**).
- If you do not have an extension table, you can prop your work up with books – we have plenty of those you can use!
- Machine embroidery foot (sometimes called a darning foot)- essential
- Hoop suitable for machine embroidery

- Spare bobbins
- Embroidery scissors
- Bring a selection of machine embroidery threads to include dark navy. Wind some navy on a bobbin to save time before you come.
- half a metre of polyester sheer voile in clear, transparent or white.
- red biro or black permanent fine line marker pen .
- soldering tool and pot with wire wool to clean if you have one
- 80/12 and 90/14 needle.
- Basic sewing kit.

Suitable for those with experience in free machine embroidery

If there is any equipment you do not have, please let us know and we may be able to lend it to you. We have spare hoops, soldering irons, scissors etc. Phone us on 01268 523780 if you have any queries.

You can bring your own lunch to eat in the studio or outside if the weather is fine or visit the Tiptree Tea rooms to purchase food.

There is a walk up from the main car park to the studio, so if you are bringing your sewing machine you may wish to bring it in a trolley. There is a lift to the first floor.